



ANNUAL REPORT

2019-20



CONTENTS

This Year at a Glance	1
Child Sponsorship	3
Improving Homes.....	5
Community Development	7
Playgroup	7
Kindu Klub	9
Football Teams	10
Lijinete Women's Network.....	12
Our Team	13
Thank you	15
Finances	16
Income and Expenditure	16
Financial Statement	17
Balance Sheet	18
Notes to the Accounts	19
Independent Examiner's Report	20



WELCOME!

Thank you to everyone who has supported us and continues to support us through a remarkable year. This report covers activities from April 2019 up to March 2020, before the global coronavirus pandemic began.

At the time of publishing, The Kindu Trust has merged with our sister charity Link Ethiopia. We have been working towards the merger for several years, which will now enable us to achieve our mission more effectively. Our work to support Ethiopian children continues under our new name: Together We Learn.

In 2019-20 The Kindu Trust supported hundreds of children to stay in education, built new homes for families, and developed a network of women to support at-risk girls, as well as other key achievements throughout the year!

A team away day was also held in May, bringing together members of our teams from Amhara and London to discuss our strategy and develop our programmes. The day brought together The Kindu Trust and Link Ethiopia teams to begin our work together ahead of the merger.

We look forward to uniting our efforts and our missions in the future as Together We Learn and have learnt this year just how valuable it is to pull together in order to continue the work that is outlined in this report.

Best wishes from all of our team,
Caroline Walker, Kindu UK Manager

OUR VISION: AN ETHIOPIA IN WHICH EVERY CHILD HAS THE OPPORTUNITY TO FULFIL THEIR POTENTIAL THROUGH ACCESS TO EDUCATION AND HEALTHCARE, AND WHERE FAMILIES ARE EMPOWERED TO BE SELF-RELIANT

THIS YEAR AT A GLANCE...

315

children received support through the sponsorship programme

55

sponsored children successfully passed their national exams and moved up to the next cycle of education

71

children received hot meals every week

10

young adults graduated from vocational training college or university

166

families received medical support

INCOME
£141,639

69 celebration parcels bought for families

90 period kits distributed to girls

19 families received home improvements,
including beds, furniture, water or electricity
installation



CHILD SPONSORSHIP

Our child sponsorship programme helps children from disadvantaged backgrounds overcome obstacles to staying in education.

We want to be sure that all children can go to school. To attend school they need a uniform, school books and stationery. They also need stability at home so that they are able to concentrate at school: this means food and water, a safe roof over their head, and a healthy guardian. Our programme is designed to address all these areas to ensure the best chance in education for that child.

Child sponsorship operates on a one-to-one basis, where a sponsor is linked directly to one child and their family. In this way, many of our supporters are actively involved in their sponsored family's development and have been able to witness the positive changes that their support has made over time.

This year...

315 children sponsored

48 young people went to university or college

166 families received medical support

19 families benefited from home improvements

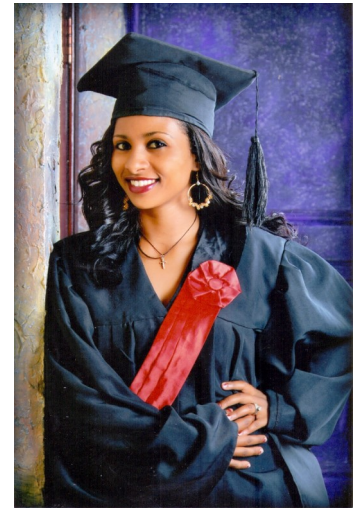
Direct Financial Support means the family can afford food, water and living costs

School Resources provide a uniform, textbooks and pens at the beginning of each school year

Our Medical Fund covers healthcare costs for the whole household

Our Training Fund means children can apply for funding to do vocational courses

Project Management means staff in Ethiopia help families resolve any problems attending school and compile updates for sponsors



IMPROVING HOMES

Our sponsored families tend to live in basic homes constructed of wood with mud plastering. Some families rent their homes privately, while some live in houses provided by the local authority, and some are given land on which they can build their own homes.

With limited incomes it can be difficult to maintain or furnish homes, and many families lack basic facilities.

Wherever we are able, we facilitate home improvements for families most in need. We help families to install water taps, electric meters, latrines, kitchen extensions and even build whole houses. These new facilities can reduce living costs and make homes healthier, safer and happier places to live.



Taps mean easy access to running water. Time is saved on travelling to community taps (where the water supply is often rationed and there are long queues) and there is no need for children to travel distances with heavy jerry cans full of water.

Taps and toilets close to the home mean better sanitation. Having them nearby is also safer for girls and women, who are often at risk travelling to fetch water or going to a quiet place for the toilet.



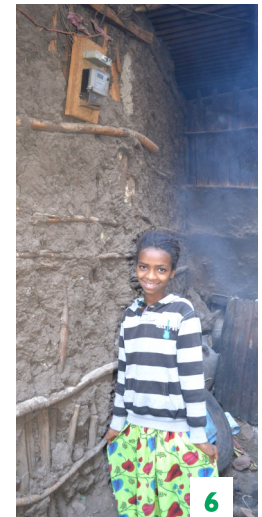
A new roof or plastered walls mean that a home is weatherproof and that a family can get through the rainy season without further damage or leaking in their homes.

Kitchen extensions reduce the risk of illness by preventing smoke inhalation related to cooking over a fire in an enclosed space.

Doors and windows allow a home to be locked, keeping families and property safe.



Electricity means that a family has power in their own home: the first investment is usually in a light bulb. Darkness falls at 6pm so, once school and chores are done, children don't have much opportunity to study. An electric light means that a child can spend more time doing homework and reading.



COMMUNITY DEVELOPMENT

Many of the children we support face additional difficulties in school due to poverty, HIV status, health issues or because they have lost their parents. Children tend to struggle with school and homework as guardians are often illiterate. The Kindu Klub and Playgroup provide educational support and recreation, increasing their likelihood of succeeding in school, completing higher education, and improving their employability later in life.

PLAYGROUP

The Playgroup serves children up to seven years old and their guardians. A youth worker supports early childhood development by teaching basic literacy and numeracy, which helps ensure that children are prepared when they start school.

The Playgroup also supports general wellbeing, providing toys many children don't have at home. It provides a safe place to play, to have a nutritious meal, and access water and soap for washing. Guardians are also welcome at the Playgroup to meet other carers and to learn about nutrition and sanitation from our team.





EVERY WEEK AT PLAYGROUP

71 children received hot meals

20 toddlers had baths with fresh water, soap and clean towels

EVERY WEEK AT KINDU KLUB

51 children got extra school support

8 children used the library

12 children played football on Friday

KINDU KLUB

The Kindu Klub is a youth club where children from the age of seven can get help with their school work, and make friends. The club is run by a youth worker and volunteers who facilitate homework support, lessons and games. A hot meal is provided to all children at each session and children have access to computers and a well stocked library at the club.

International volunteers help out at the Kindu Klub, supporting with lessons, delivering craft activities, and, most importantly, teaching English. Having English speaking volunteers gives pupils the opportunity to practice speaking and understanding English in a natural, conversational way that greatly benefits them in their English lessons and all other lessons taught in English from secondary level.

Our Kindu Klub Youth Worker Asfaw says: *"Regular interaction with international volunteers helps children to develop their social skills as well as use their English. They become more sociable and curious and eventually start English conversations themselves."*



FOOTBALL TEAMS

Our football teams give children the chance to get fit and enjoy safe play. Organised after-school activities are not common, especially for poorer families, where children are expected to help at home. We have boys' and girls' football teams who train on a regular basis.

This year we set-up a new under-15 boys' football team, in addition to our under-17 team. Both teams entered Gondar town annual tournaments and the under-15 team was delighted to win their competition as debutantes (top photo).

The girls' football team (bottom photo) is one of only a handful of girls' teams in Gondar, setting an important example of how worthwhile it is to invest in safe areas for girls to enjoy sports. A number of girls from our team this year have been spotted by the city's professional women's team and the Gondar University team, which will allow them to develop their abilities even further.

As well as fitness, all the team members develop peer support networks, teamwork skills and confidence through the football teams.





"What happened in the past is the past. I would like to change my life now and for my children to finish school and get a successful job. I would also like to help other girls to change like I do."

Adina, Lijinete Network Member



LIJINETE WOMEN'S NETWORK

In September 2019, we started a project to train a network of women who have been affected by child marriage and motherhood, so that they can identify and support girls in their communities. The network is called the 'Lijinete Network', as the word 'lijinete' means 'childhood' in Amharic.

The network is based in Tikil Dingay, a semi-rural area on the outskirts of Gondar where child marriage is more common. The project started by providing leadership and confidence training to 15 young women. The training developed their ability to identify when a girl may be at risk, to advocate on her behalf and to support by signposting her to helpful services. With this training, the women are now able to encourage other families in their network to keep girls in school, to identify and act if a child marriage is being arranged, to raise awareness about the risk and impact of sexual assault, and to share learning about gender roles and inequalities that affect men and women. The network members work with our staff and the local women's office to support and safeguard any girl who may need it.

The project also provided business training and start-up loans to all of the women so that they could become financially independent. The women set up businesses selling fruit, hosting roadside cafés and making and selling cereal snacks. As many of the women have children, the business loans ensure they are able to support their needs while acting as a network in the community.

Every month the Lijinete Network Members meet to discuss news, share their experiences of talking to people in the community and provide peer support and advice to each other. Later in the year meetings will be arranged with local authority teams and community elders to share their experience and make recommendations to further help girls.

OUR TEAM ETHIOPIA

SPONSORSHIP



Marta Bekele,
Manager



Aster Molla,
Coordinator



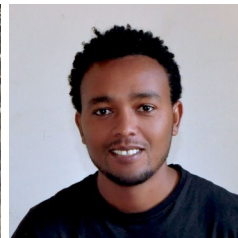
Sitotaw Ambachew,
Coordinator



Zemene Mersha,
Manager



Leul Abebe,
Accountant
(until Aug 2019)



Binalfew Alemu,
Accountant
(from Sep 2019)



Asfaw Admas,
Kindu Klub
Youth Worker



Chekula
Gebre-
Egzabier,
Playgroup
Youth
Worker



Selamawit
Abebe,
Cashier &
Purchaser



Wubit Molla,
Cook
(until Dec
2019)



Askalech
Astatkie,
Cook



Abebech
Mequanent,
Cleaner



Wagnew
Shumeye,
Guard



Abate Taye,
Guard



Abebe Dinku,
Gardener

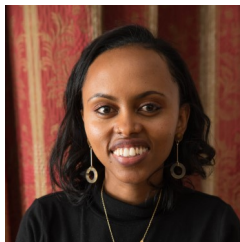
UNITED KINGDOM



Caroline Walker,
UK Manager



Michou Gerits,
Sponsorship
Coordinator
(until Jul 2019)



Helen Mebrate,
Sponsorship
Coordinator
(from Sep 2019)

The Kindu Trust is a UK and Ethiopian registered charity.

We employ Ethiopian staff to run all our activities in Ethiopia and have a trustee board and two-part time staff in the UK who fundraise and support the charity's work.

TRUSTEES

Ashley England, Chair

Elizabeth Gezahegn King

Gabriella Otty

Holly McKenzie

Jack Sharville, Treasurer

Matthew Stockdale

Nadine Carle-Edgar

HONORARY PRESIDENT



Kate Fereday Eshete is the founder of The Kindu Trust. She no longer manages the day-to-day running of the charity but promotes our work through her role as Honorary President.

THANK YOU!

None of the work in this report would be possible without you.

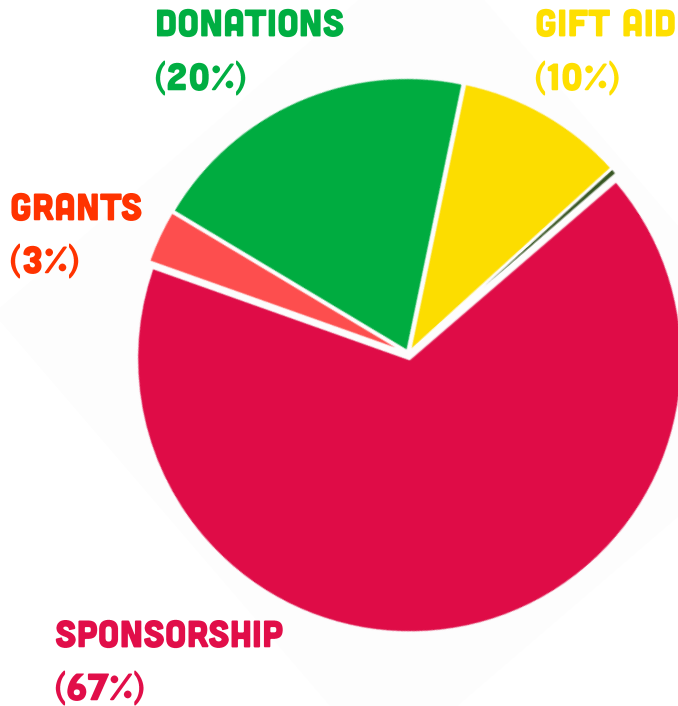
We would like to take this opportunity to thank every sponsor, supporter, foundation and community group who has supported the work of The Kindu Trust this year.



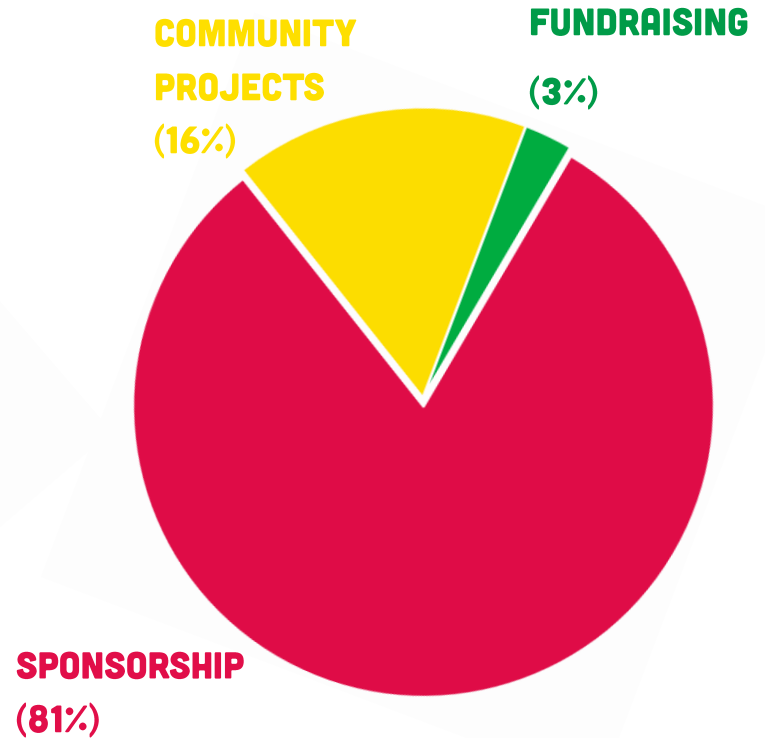
Special thanks to:

Alice Hearn
Andreas Pfau
Barrow Upon Soar community
Camp Treetops, NY
Eva Reckitt Trust Fund
FORWARD
Hanny Durkstra
Link Ethiopia
Myrtle Park School
Paul and Leny Lucker
Pears Foundation
Studiosus Foundation
The Sycamore Trust
The Tula Trust

INCOME



EXPENDITURE



2019–20 FINANCIAL STATEMENT

Income (all figures in GBP)	Unrestricted	Restricted	2020 Total		2019 Total
Income from charitable activities					
Sponsorship	-	94,469	94,469		97,093
Projects	-	4,474	4,474		19,561
Income from generating funds					
Voluntary income	27,408	500	27,908		19,254
Merchandise	559	-	559		154
Interest	57	-	57		32
Gift Aid	14,172	-	14,172		16,893
Total Income	42,196	99,443	141,639		152,987
Expenditure					
Expenditure on charitable activities					
Sponsorship	- 25,491	- 61,099	- 86,590		102,036
Projects	- 11,954	- 5,644	- 17,598		17,691
Expenditure on raising funds					
Fundraising	- 2,894	-	- 2,894		4,110
Total Expenditure	- 40,339	- 66,743	- 107,082		123,837
Net Income	1,857	32,700	34,557		29,150
Balance brought forward	54,717	41,968	96,685		67,535
Balance carried forward	56,574	74,668	131,242		96,685

BALANCE SHEET

Current assets	2020	2019
Debtors	13,899	15,130
Cash at bank and in hand	117,343	81,555
Total	131,242	96,685
Current liabilities		
Creditors	-	-
Net assets	131,242	96,685

Funds	2020	2019
Unrestricted funds	56,574	54,717
Restricted funds	74,668	41,968
Total	131,242	96,685



The trustees declare that they have approved this Annual Report and Accounts, including notes.

Signed on behalf of the Trustees on 29th January 2021 by Jack Sharville and Ashley England.

Jack Sharville

Ashley England

NOTES TO THE ACCOUNTS

1. The principal accounting policies, all of which have applied consistently throughout the year, are set out below. Where a change of accounting policy or treatment has occurred, the prior year figures have been adjusted to reflect the new treatment.

a) **Basis of Accounting** The financial statements are prepared using the historical cost convention and are in accordance with trust law, applicable accounting standards, and the Statement of Recommended Practice, “Accounting and Reporting by Charities”, issued in March 2005, as amended. There were no related party transactions for the period.

b) **Fund Accounting** Unrestricted funds are general funds that are available for use at the trustees’ discretion in furtherance of any of the objectives of the charity. Restricted funds are those donated for use in a particular area or for specific purposes, the use of which is restricted to that area or purpose and the restriction means that the funds can only be used for specific projects or activities.

c) **Income** Represents the amounts donated in cash. The Charity’s unrestricted fund consists of funds which the Charity may use for its charitable purposes.

d) **Foreign Currencies** Transactions in foreign currencies are recognised at the rate of exchange at the date of the transaction. The Charity makes monthly payments in Sterling to Ethiopia which has a closed currency, the Birr. The Charity does not own any non-monetary assets abroad.

e) **Trustee's Remuneration and Expenses** No remuneration was paid by the Charity to any of the Trustees for their services during the year. Trustees may receive out-of-pocket expenses.

f) **Taxation Irrecoverable** VAT is not separately analysed and is charged to the statement of financial activities when the expenditure to which it relates is incurred and is allocated as part of the expenditure to which it relates.

INDEPENDENT EXAMINER'S REPORT

I, Alice Hearn, report on the accounts of the Trust for the year ended 31 March 2020, which are set out on page 17 to 18 with Notes to the Accounts on page 19.

Respective responsibilities of trustees and examiner

The charity's trustees are responsible for the preparation of the accounts. The charity's trustees consider that an audit is not required for this year under section 144(2) of the Charities Act 2011 (the 2011 Act) and that an independent examination is needed. It is my responsibility to: Examine the accounts under section 145 of the 2011 Act; to follow the procedures laid down in the general Directions given by the Charity Commission under the section 145 (5)(b) of the 2011 Act and; to state whether particular matters have come to my attention.

Basis of the Independent Examiner's Report

My examination was carried out in accordance with the General Directions given by the Charity Commission. An examination includes a review of the accounting records kept by the charity and comparison of the accounts presented with those records. It also includes consideration of any unusual items or disclosures in the accounts, and seeking explanations from you as trustees concerning any such matters. The procedures undertaken do not provide all the evidence that would be required in an audit and consequently no opinion is given as to whether the accounts present a 'true and fair view' and the report is limited to those matters set out in the statement below.

Independent Examiner's Statement

In connection with my examination, no matter has come to my attention which gives me reasonable cause to believe that in any material respect the requirements 'to keep accounting records in accordance with section 130 of the 2011 Act' and 'to prepare accounts which accord with the accounting records and comply with the accounting requirements of the 2011 Act' have not been met; or to which, in my opinion, attention should be drawn in order to enable a proper understanding of the accounts to be reached.

Name: Alice Hearn, c/o Partnership House, Carlisle Place, London SW1P 1BX

Date: 29 January 2021



In September 2020
The Kindu Trust merged
with our sister charity Link
Ethiopia, and we now
operate under the name
Together We Learn.

WWW.TWLETHIOPIA.ORG

HELLO@TWLETHIOPIA.ORG



Registered charity
number: 1069574



Registered charity
number: 1165953